



Water Distillation System **Instruction Manual** H2oLabs Model 300 & 300SS

Model 300

Model 300SS

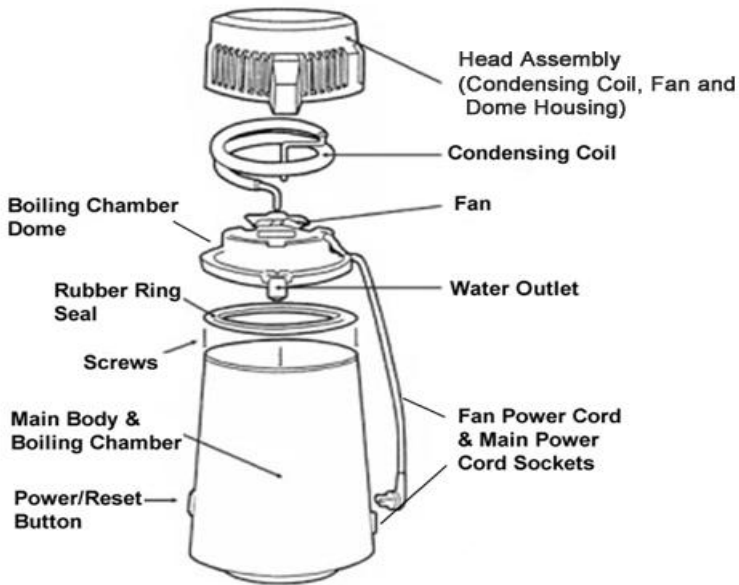


Thank you for purchasing an H2oLabs Countertop Water Distillation System. You'll soon be drinking the **PUREST** water possible.

**PLEASE READ THIS INSTRUCTION MANUAL
for a quick, easy and enjoyable water making experience.**

DO NOT DISCARD SHIPPING BOX OR STYROFOAM.
There are parts inside the Styrofoam that could be lost, and the shipping box can be used should the unit be returned for repair.

PARTS



Not Shown Above:

Glass Collection/Serving Carafe and related parts

Activated Charcoal Sachet Housing

Activated Charcoal Sachets (6 pack)

Main Power Cord

PACKAGE INCLUDES:

Water Distillation Unit, (Head and Body Assemblies. See above.)

Glass Carafe, (Inside unit. **See Carafe Instructions before removing**)

Detachable Main Power Cord (Inside Styrofoam packaging)

Activated Charcoal Sachet Housing (Inside Styrofoam packaging)

Activated Charcoal Sachets (6 pack) (Inside Styrofoam packaging)

Scale Cleaner Crystals (Inside Styrofoam packaging)

Instruction Manual

Please check inside both sides of Styrofoam packaging to locate all parts listed above. Save shipping box and Styrofoam should unit need to be returned for repair.

SAFETY INSTRUCTIONS - Read Before Operating

SCALDING DANGER!

- ▲ Do not allow children or disabled people to operate the unit or come in close proximity of it or the power cord.
- ▲ Never remove the top of the distiller when it is on or for at least 30 minutes after it has turned off. Always allow the unit to cool before removing the top of the unit to avoid potential hot water or steam injury.
- ▲ Do not allow any cord to hang over the counter which could get tangled or caught resulting in the unit being pulled off of the countertop.
- ▲ Always operate the unit on a dry, flat, heat-tolerant surface, out of the reach of children.

ELECTRICAL PRECAUTIONS:

- ▲ To avoid the risk of arching or shorting, when connecting the Fan and Main Power Cords, always plug in the Main Power Cord to the wall outlet LAST. When disconnecting the Fan and Main Power Cords, always unplug the Main Power Cord from the wall outlet FIRST.
- ▲ Push plugs all the way into the sockets to avoid a poor connection that could result in arching.
- ▲ Do not share the same outlet with other high-wattage appliances while operating in order to prevent overloading.
- ▲ Always unplug the Main Power Cord before filling or cleaning the unit or whenever not in use.
- ▲ Do not use extension cords unless absolutely necessary. However, use of a power strip to protect against lightning strikes and power surges is acceptable.
- ▲ Never immerse any part of the unit in water, (except Carafe), and keep the outside of the unit and plug sockets dry.
- ▲ The unit turns off automatically upon completion. Only if you must stop the process early, unplug the Main Power Cord from the wall outlet.
- ▲ Do not attempt to make any repairs to the unit. It should be repaired only by an electrical appliance repair shop.

SAFETY INSTRUCTIONS - Read Before Assembling Carafe

▲ **CAUTION: Always handle the Glass Carafe with care to avoid breakage and possible injury.**

▲ Discontinue use of the Carafe if it is cracked, chipped or damaged in any way.

▲ Broken glass should be carefully collected and placed into a rigid box or container so it can be handled and disposed of properly without injury.

▲ Follow Assembly Instructions accurately to ensure safety. An improperly assembled glass Carafe could cause damage to it or result in personal injury.

▲ Place a towel on the table surface underneath the Carafe to prevent sliding or damage during assembly or while cleaning.

▲ When using Carafe, use both hands for proper support.

▲ When setting Carafe on any hard surface, (especially when full), take care to rest it gently on the surface to avoid damage.

CARAFE ASSEMBLY INSTRUCTIONS

Only tool required: Phillips (Cross-Head) Screwdriver, (not included)

Note: Please use caution when handling the glass Carafe.



1. Remove the water distiller head, take out the Styrofoam package inside and **carefully** remove the glass Carafe. Do not continue assembly if the Carafe is cracked, chipped or damaged in any way.



2. Open the Styrofoam package and locate all parts as specified below:

Handle

Handle Cover

Lid

Activated Charcoal Sachet Housing

Glass Carafe

2-Stainless Steel Straps & 2 Phillips, (cross-head), Screws



3. Remove the screws and peel off the blue protective film on the Stainless Steel Straps.

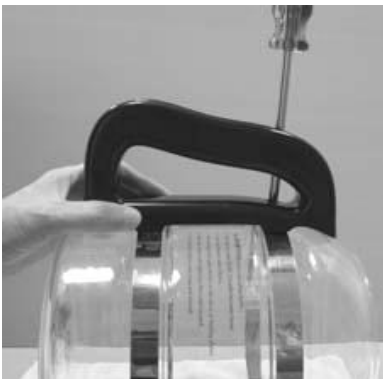
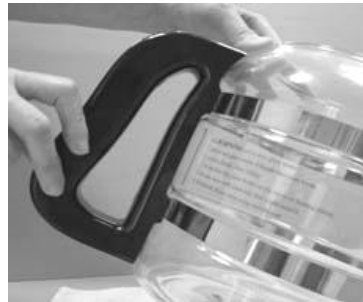


4. Place a towel or soft cloth on the work surface to protect the glass Carafe. There are two indentations on the Carafe body. Wrap one strap around the Carafe, placing it in the indentation. Position the strap so that the cap nut is facing towards the Carafe. Snap the other end with screw slot over the cap nut. (See above.) Do the same for the other strap. The cap nut orientation must be the same for both straps.



5. Align right-hand side of the screw slots to the black reference line on the Carafe label.

6. The handle fits over the two screw slots. Align the Handle with the slots and the black reference line to the right.

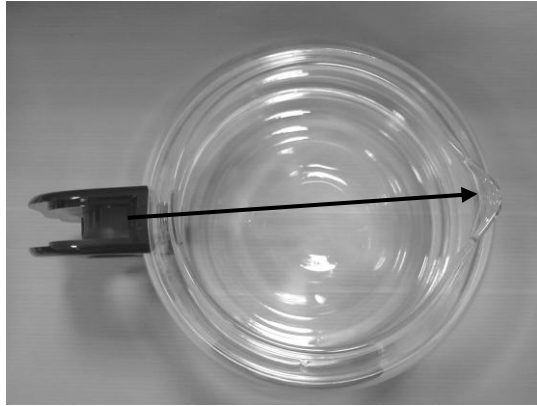
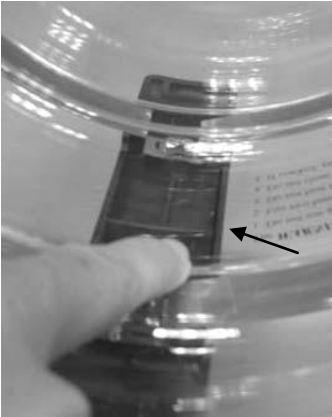


7. Insert the upper screw first. Using a Phillips, (cross-head), screwdriver, turn the screw so that it holds, but do not tighten all the way yet.

8. Insert the lower screw next and turn so that it holds but do not tighten yet. Move the Handle to the right a little so that the black reference line is just covered evenly by the Handle edge.

9. Tighten both screws while making sure the Handle is vertically aligned with the black reference line. Do not use excessive force.





10. Place the Carafe right side up. Viewed from inside, check to see that the Handle is aligned to the black reference line. When done correctly, the Handle will also be aligned with the spout on the opposite end. If necessary, loosen the screws and re-adjust.

11. Lift the Carafe by the handle a few inches above table surface and GENTLY shake the Carafe to verify that the handle is securely assembled. Tighten the screws more if the handle feels loose.



12. Clip the Handle Cover onto the handle. Push it all the way in.

13. Place the lid on the Carafe with the opening facing the Carafe spout. The Carafe is now ready to use.



Always handle the glass Carafe carefully and set it GENTLY on hard surfaces as it is breakable.

Since the Carafe weighs approx. 9 lbs. when full, it should be lifted and carried with both hands. One hand should be holding the handle and the other hand supporting the bottom of the Carafe. An easy way to pour from a full Carafe is to allow it to rest on the counter-top, (thereby supporting the weight), while tilting it to fill a drinking glass, etc.



INSTRUCTIONS BEFORE FIRST USE

1. Locate the unit on a flat, sturdy, heat tolerant surface. Keep the unit in a well ventilated area away from other heat sources so that the cooling fan will operate efficiently.
2. Wash the Carafe prior to use with a couple drops of dish soap and warm water. Rinse thoroughly and dry.
3. Wash the Boiling Chamber using a couple drops of dish soap and a little warm water. Swab the interior of the Boiling Chamber with a regular soft sponge and then rinse and dry well. Never use abrasive detergent cleaners, metal brushes or metal scouring pads, and to protect the electrical components, never submerge the Main Body or Head Assembly in water.

When using the appliance for the first time, it is possible that some harmless material may remain from manufacturing, packaging or shipping. This could leave an unwanted taste or odor in the purified water. For this reason it is recommended that the first cycle not be consumed. Water from the first cycle may be used for pets, watering plants, for steam irons or in humidifiers, etc. or may be discarded.

OPERATING INSTRUCTIONS

Follow these simple steps to ensure that you maintain a continuous supply of drinking water. Complete process takes only 5 minutes to prepare unit to begin making pure water to drink and enjoy all day.

Do not plug in to household electrical outlet until the unit is full, outside is dry and unit is completely assembled.

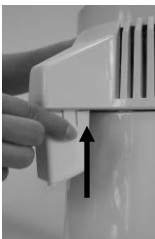
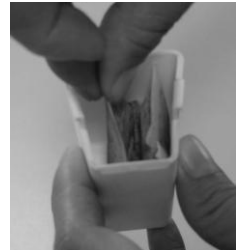
1. Using a pitcher or directly from your sink faucet, fill the Boiling Chamber with tap water up to the internal fill line, (approx. 2” from the top). Note: Do not let the water run unattended to prevent spillover which could allow water to get in to the electrical components at the base of the unit.

2. Lift out of sink and place unit on dry countertop.

3. Dry off any moisture on the exterior of the unit. While all cords are unplugged, also make sure the plugs and sockets are dry.

4. Position and seat the Head Assembly onto the Main Body while lining up the Fan Cord with the Fan Cord Socket. Insert the Fan Cord Plug into the Fan Cord Socket **firmly until it has completely seated.**

5. Each time a new Activated Charcoal Sachet is to be used for the first time, dip it in a cup of water a few times to remove the dust. (The activated charcoal dust is harmless.) Fold the Activated Charcoal Sachet into a “V” and insert it into the Sachet Housing open end up. Do not obstruct the outlet at the bottom.



6. Press and insert the 2 raised edges of the Sachet Housing into the 2 slots under the Distiller Water Outlet.



7. Line up the Sachet Housing outlet with the spout of the glass Carafe to collect the distilled water. Position the Carafe accurately so that the water will not drip on the side of the Carafe or onto the countertop.



8. Plug the Main Power Cord into the Main Power Socket on the unit FIRST. And then plug the Main Power Cord into your household electrical outlet LAST. You are now ready to begin making water!

9. Press the Power/Reset Button to “ON” to begin the cycle. The unit will automatically shut off when the process is completed. In approximately 5 to 6 hours a full gallon of the PUREST WATER possible will be ready for you. Enjoy!

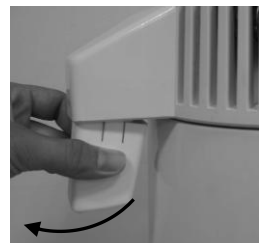
MAINTENANCE

Never use abrasive cleaners, wire brushes or metal scouring pads which can damage the surface of the Boiling Chamber or the exterior. Scotch-Brite™ or similar NON-METAL pads may be used for interior surface.

The Boiling Chamber has normal “welding spots” at the bottom that are sometimes visible. You should not attempt to remove them.

Keep the condensing coil in the top of the unit clean to maintain maximum efficiency. Whenever heavy dust accumulation is apparent, vacuum through the slots in the cover.

The Activated Charcoal Sachet helps to reduce any noticeable taste or residual gases. Replace the Activated Charcoal Sachet monthly, or whenever there is any noticeable taste or odor. To replace the Sachet when necessary, press sides of the Housing and tilt out of the slots.



CLEANING INSTRUCTIONS

Clean the inside of the boiling tank after each cycle has ended and the unit has cooled for at least 30 minutes.

1. Remove Carafe from the Main Unit and empty into a pitcher or other storage container, (and/or directly into your coffee/tea maker), for use.
2. Unplug the Main Power Cord from your household outlet **FIRST** and then from the unit.
3. Unplug the Fan Power Cord from the Fan Power Cord Socket and remove Head Assembly from the Main Unit.
4. Wipe inside of Head Assembly Dome and the Rubber Ring Seal to remove any moisture or residue. It is not necessary to remove the Rubber Ring Seal in order to clean and dry it.
5. Rinse out the inside of the Boiling Chamber and use a sponge (Scotch-Brite™ or similar NON-METAL pads may also be used), to remove any left over residue from the inside bottom, and rinse again. **Never submerge the unit in water.** (Try to keep the outside of the unit dry while cleaning.) If scale remains, pour in approx. one-half cup of plain white distilled vinegar and let set for an hour or so as needed and then loosen with a sponge, (or Scotch-Brite™, etc.), and rinse out. Difficult residue may require periodic use of a safe water scale cleaner such as that supplied with the unit or available at H2oLabs.com.
6. For convenience, fill the unit after cleaning, while still in the sink, in order to prepare for the next cycle.
7. Place unit on the counter-top and dry the exterior with a soft cloth after each cleaning and filling to prevent water or rust spots. Also insure that the Fan Plug and both outlet sockets on the Main Body are dry.
8. Position Head on the Body and **plug the Fan Cord firmly until it has completely seated** into it's outlet on the unit. Plug the Main Power Cord into the unit and then into the household outlet. Position Carafe and press the Reset Button when you are ready to begin the next cycle.

TIPS

Prepare the unit at any convenient time during the day. But wait until before retiring each night to turn it on. That way, any noticeable noise and heat from the process will be minimized. More importantly, the unit will have ample time to cool down by morning which will make it quicker, easier and safer to clean and prepare for the next cycle.

Obtain a large refrigerator storage container with a dispensing valve for easy access. When it gets about half empty, it's time to make another gallon. This way, you'll always have a reserve supply handy.

Distilled water is also great for coffee, tea, cocoa and frozen fruit juices; ice cubes, cooking and low sodium diets; watering plants or sprouts; pets and aquariums; or anything requiring distilled water like steam irons or other steam appliances and automotive batteries.

SPECIFICATIONS:

Size: 8 in. Width, (20 cm) x 14 1/4 in. Height, (36 cm);
Weight: 7.7 lbs. (3.5 kg);
Capacities: Boiling Chamber 1 Gal. (4 L.);
Carafe: 1 Gal. (4 L.);
Water Output: Up to 4 Gallons Distilled Water per Day (16 L.)
Power Source: AC 120V/60Hz;
Consumption: 580W (Total)



The H2oLabs Countertop Water Distillation System will provide your household with THE PUREST WATER POSSIBLE and it's made Fresh every day to Taste Great.

**Visit www.H2oLabs.com
or Call 1-800-990-3560**

(Monday through Friday 8:00 AM to 5:00 PM Central time.)

to order Activated Charcoal Sachets, Cleaning Crystals, Parts and Accessories. High Capacity Automatic Units and other helpful products and information can also be found at the **H2oLabs.com** website.